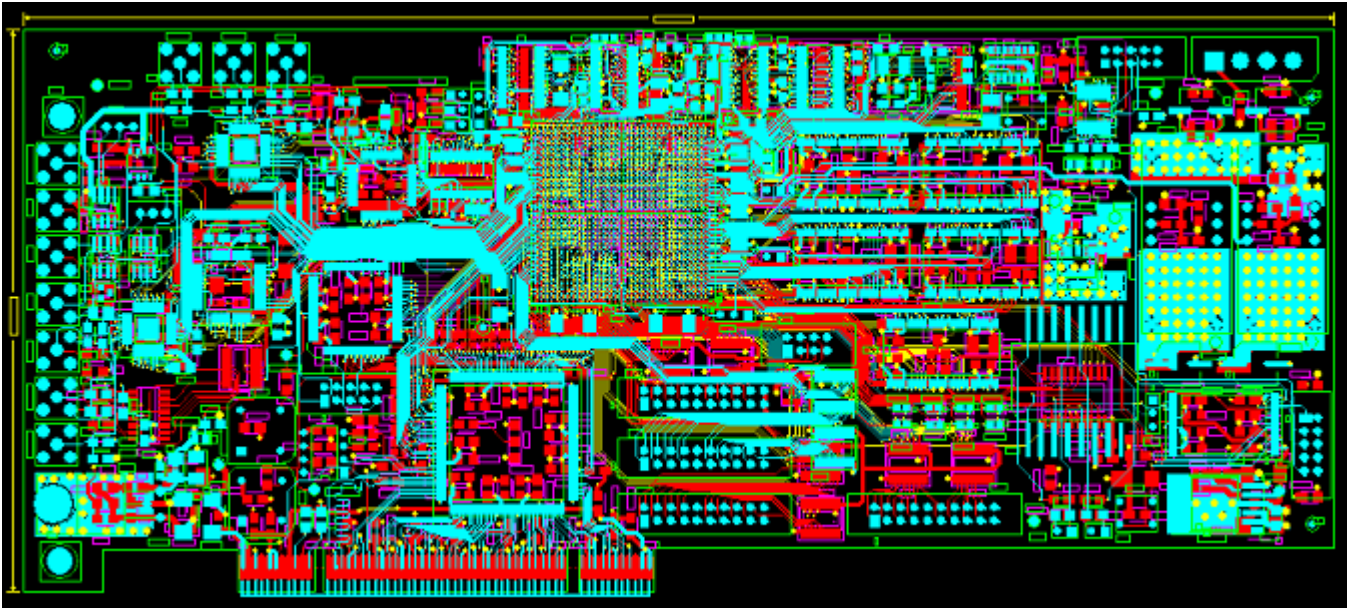


PCB DESIGN CASE STUDY

PCB Name : Video Processing Card:

- It is a PCI Based Video Processing Card with 5 million FPGA gates. Working at 33 MHz.
- Major components - 1 V2PRO-50 in Fine Pitch BGA of 1152 pin(FF1152)., Memories..
- Board Size = 24.949 cm x 10.668 cm = 266 sq cm
- Layers - 8
- Components - 492 of which 182 were from top side and 310 from bottom side.
- Number of equivalent 16 pin ICs - 252.
- Total No. of Connections - 3566.
- No. of Vias - 2318.



ACTUAL PCB PHOTOGRAPH

