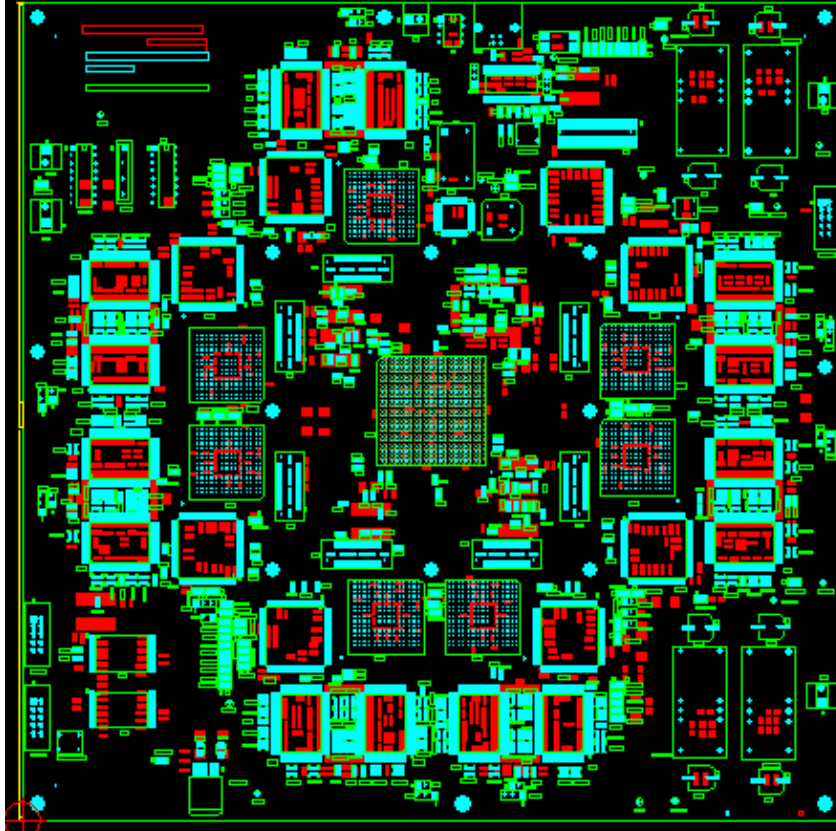


PCB DESIGN CASE STUDY

Case Study -1

- **PCB name** - ASIC Tester:
- It was a very dense and complex board working at 125 MHz.
- **Major components** - One V2PRO FPGA in FG1152 package and 7 Spartan-3 FPGAs in FG456 package. 21 memories in BGA package
- **Board Size** = 26.2 cm x 26.2 cm = 686 sq cm
- **Layers** - 12
- **Components** - 1445 of which 529 were from top side and 916 from bottom side.
- Number of **equivalent 16 pin ICs** - 783.
- Total No. of **Connections** - 10150.
- No. of **Vias** - 7820.

Complete SI analysis was done for this board after.
Length matching was done on critical nets to reduce skew problems.



Actual Photograph of the PCB

